

GENERAL SPECIFICATIONS FOR GB450 SERIES:

PLUMBING: 1/4" FPT potable water inlet.
 Condenser water supply inlet: 3/8" FPT
 1" FPT bin drain.
 Condenser drain: 1/2" FPT
 3/4" I.D. flex tubing cuber drain.

EXTERIOR FINISH:
 Type 300 Series stainless steel.

REFRIGERATION SYSTEM:
 3/4 HP Compressor. Thermostatic expansion-valve controlled. R-404A HFC.

CLEARANCE REQUIREMENTS:
 Allow 4" left side, 8" right side and 6" back and top for ventilation and utility connections.

RECOMMENDED OPERATING REQUIREMENTS:

	Min.	Max.
Air Temperatures	45°	90°F
Water Temperatures	45°	90°F
Water Pressures	20-100 PSIG	
Voltage	104-126V/198-253V	

GB450 Series Daily Capacities: Lbs. of ice per 24 hours per unit

GB451W/GB454W Water-Cooled

Incoming Water Temp., °F	Ambient Temp., °F	
	70°	90°
50°	460lbs. 209kg	-
70°	-	443lbs. 201kg

GB451A/GB454A Air-Cooled

Incoming Water Temp., °F	Ambient Temp., °F	
	70°	90°
50°	460lbs. 209kg	-
70°	-	393lbs. 178kg

The above capacities are based on (HK) Half Cube and can be increased or reduced between 5-15% depending on cube size or by adjusting the cuber to produce concave cubes.

KOLD-DRAFT ice machines are designed for indoor use and for operation within the above listed limits. Any deviation may eliminate coverage of factory warranties. Failures caused by operation on voltages other than indicated on model nameplates are not considered defects.

GB450 | B310 ICE CUBER

MODEL	ICE PRODUCTION PER 24 HOURS ¹	ELECTRICAL SUPPLY CHARACTERISTICS, V-HZ-PH	NUMBER OF WIRES PLUS GROUND	MINIMUM CIRCUIT AMPACITY ²	MAXIMUM FUSE SIZE, A	CONDENSER UNIT TYPE	SHIPPING WEIGHTS
GB451A*	460	115-60-1	2	19.9	30	air-cooled	197lbs. 89kg
GB451W*	460	115-60-1	2	16.4	25	water-cooled	195lbs. 88kg
GB454A*	460	208/230-60-1	2	11.9	20	air-cooled	197lbs. 89kg
GB454W*	460	208/230-60-1	2	11.3	15	water-cooled	195lbs. 88kg
GB457A*	460	220-50-1	2	-	-	air-cooled	197lbs. 89kg
GB457W*	460	220-50-1	2	-	-	water-cooled	195lbs. 88kg

*KOLD-DRAFT ICE: To specify described cube size place "K" cubelet, "HK" half-cube, or "C" full cube in place of *asterisk in model numbers.

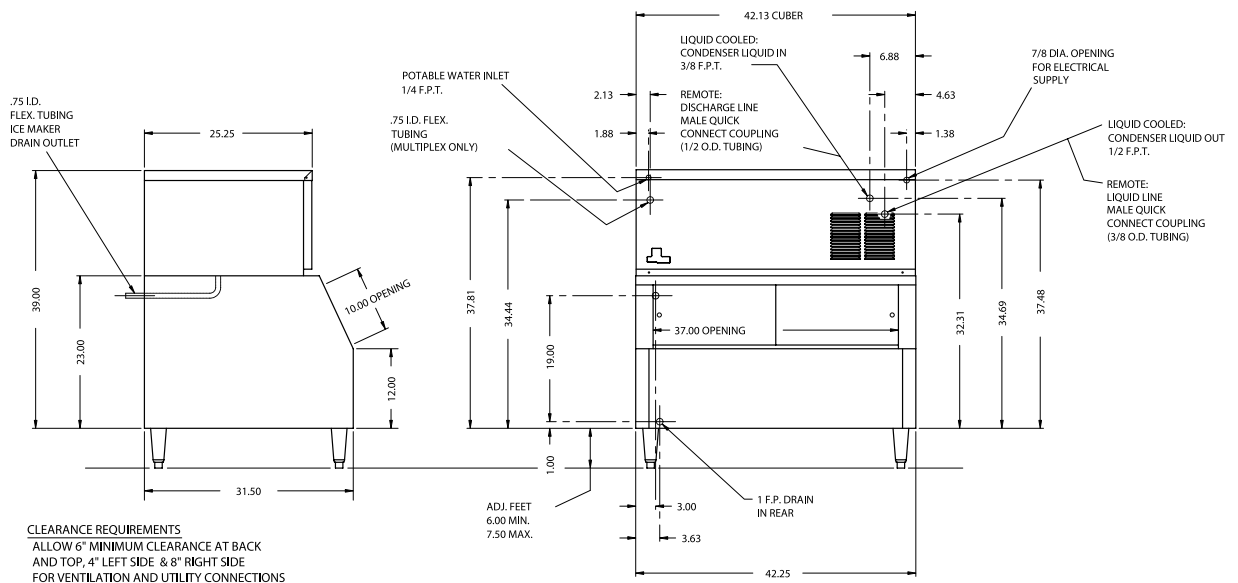
¹ Production capacity at 50°F water and 70°F air.

² Use this value to determine minimum wire size per National Electric Code Requirements.

Please observe minimum circuit ampacity and maximum fuse size listed above. Fuse or HACR-type circuit breaker branch circuit protection within the range of minimum ampacity and maximum fuse size shall be provided or warranty may be voided. We reserve the right to make product improvements at any time. Specifications and design are subject to change without notice.



GB450 | B310



KOLD-DRAFT

1525 E. Lake Road | Erie, PA 16511 | 800-840-9577 | Fax: 800-548-9392

e-mail: info@kold-draft.com | www.kold-draft.com

