

GB650 | B650

ICE CUBER

UP TO 600 LB. DAILY CAPACITY

SIMPLICITY BY DESIGN

The **KOLD-DRAFT 650 Series Classic Ice Cuber** produces up to 600 lbs. of ice per day. It is engineered with rugged unibody construction and its time-proven design ensures reliable operation, greater water efficiency and maximum ice-making capacity. Serviceability is from the front and the use of environmentally-friendly R-404A refrigerant gives greater efficiency.

The **KOLD-DRAFT B650 bin** holds 650 lbs. of ice. The **B650** has a polyethylene liner and stainless steel exterior front, sides and top. It is insulated with non-CFC foam for exceptional rigidity and optimum insulation. The **B650** comes with an insulated stainless steel lift up door.



GB650 Series Ice Cuber on a B650 Bin



Full Cube
1 1/4" x 1 1/4" x 1 1/4"



Half Cube
1 1/4" x 5/8" x 1 1/4"



Cubelet
1 1/4" x 5/8" x 5/8"

KOLD-DRAFT®

THE HIGHEST QUALITY ICE

Ice that's free from impurities. Ice that's uniformly shaped ensuring maximum displacement and ease of handling. Ice that sparkles, melts slowly and looks like ice should look. Three sizes of **KOLD-DRAFT** cubes to choose from that meet your exact needs. Full cubes, half cubes and cubelets – the highest quality ice.

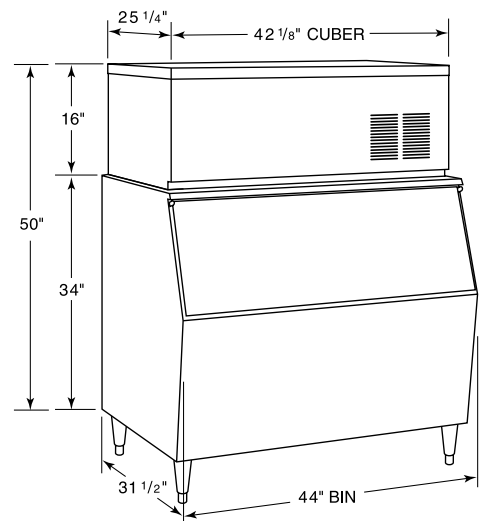
STACKABILITY

GB Series Classic Ice Cubers are stackable with each other and can be stacked on existing **KOLD-DRAFT GB Series Classic and Electronic Cubers**. This unique "Add-A-Unit" feature will give you unsurpassed flexibility in ice-making capacity. So as your business grows, so can your ice capacity without using valuable floor space.

KOLD-DRAFT'S WARRANTY

KOLD-DRAFT'S Warranty provides five years parts and labor on the entire machine and five years on the compressor and evaporator parts. See **KOLD-DRAFT'S** Warranty Statement for details.

GB650 | B650



GB650 on a B650 Bin. Stores 660 lbs. of ice, based on 35 lbs./cu.ft. at 90% of bin volume.

GENERAL SPECIFICATIONS FOR GB650 SERIES:

PLUMBING: 1/4" FPT potable water inlet.
 Condenser water supply inlet: 3/8" FPT
 1" FPT bin drain.
 Condenser drain: 1/2" FPT
 3/4" I.D. flex tubing cuber drain.

EXTERIOR FINISH:
 Type 300 Series stainless steel.

REFRIGERATION SYSTEM:
 1 1/2 HP Compressor. Thermostatic expansion-valve controlled. R-404A-HFC.

CLEARANCE REQUIREMENTS:
 Allow 4" left side, 8" right side and 6" back and top for ventilation and utility connections.

RECOMMENDED OPERATING REQUIREMENTS:

	Min.	Max.
Air Temperatures	45°	90°F
Water Temperatures	45°	90°F
Water Pressures	20-100	PSIG
Voltage	198-253V	

GB650 Series Daily Capacities: Lbs. of ice per 24 hours per unit

GB654W Water-Cooled

Incoming Water Temp., °F	Ambient Temp., °F	Capacity
	70° 90°	
50°		593lbs. 269kg
70°		563lbs. 255kg

GB654A Air-Cooled

Incoming Water Temp., °F	Ambient Temp., °F	Capacity
	70° 90°	
50°		597lbs. 271kg
70°		498lbs. 226kg

GB654R Remote Air-Cooled^{1,4}

Incoming Water Temp., °F	Ambient Temp., °F	Capacity
	70° 90°	
50°		600lbs. 273kg
70°		592lbs. 269kg

The above capacities are based on (HK) Half Cube and can be increased or reduced between 5-15% depending on cube size or by adjusting the cuber to produce concave cubes.

KOLD-DRAFT ice machines are designed for indoor use and for operation within the above listed limits. Any deviation may eliminate coverage of factory warranties. Failures caused by operation on voltages other than indicated on model nameplates are not considered defects.

GB650 | B650 ICE CUBER

MODEL	ICE PRODUCTION PER 24 HOURS ²	ELECTRICAL SUPPLY CHARACTERISTICS, V-HZ-PH	NUMBER OF WIRES PLUS GROUND	MINIMUM CIRCUIT AMPACITY ³	MAXIMUM FUSE SIZE, A	CONDENSER UNIT TYPE	SHIPPING WEIGHTS
GB654A*	597	208/230-60-1	2	18.0	30	air-cooled	228lbs. 103kg
GB654W*	593	208/230-60-1	2	17.3	30	water-cooled	215lbs. 98kg
GB654R*	600	208/230-60-1	2	17.4 ⁴	30	remote air-cooled	216lbs. 98kg
GB657A*	597	220-50-1	2	-	-	air-cooled	228lbs. 103kg
GB657W*	593	220-50-1	2	-	-	water-cooled	215lbs. 98kg

*KOLD-DRAFT ICE: To specify described cube size place "K" cubelet, "HK" half-cube, or "C" full cube in place of *asterisk in model numbers.

¹ Condenser inlet temperature 70°F.

² Production capacity at 50°F water and 70°F air.

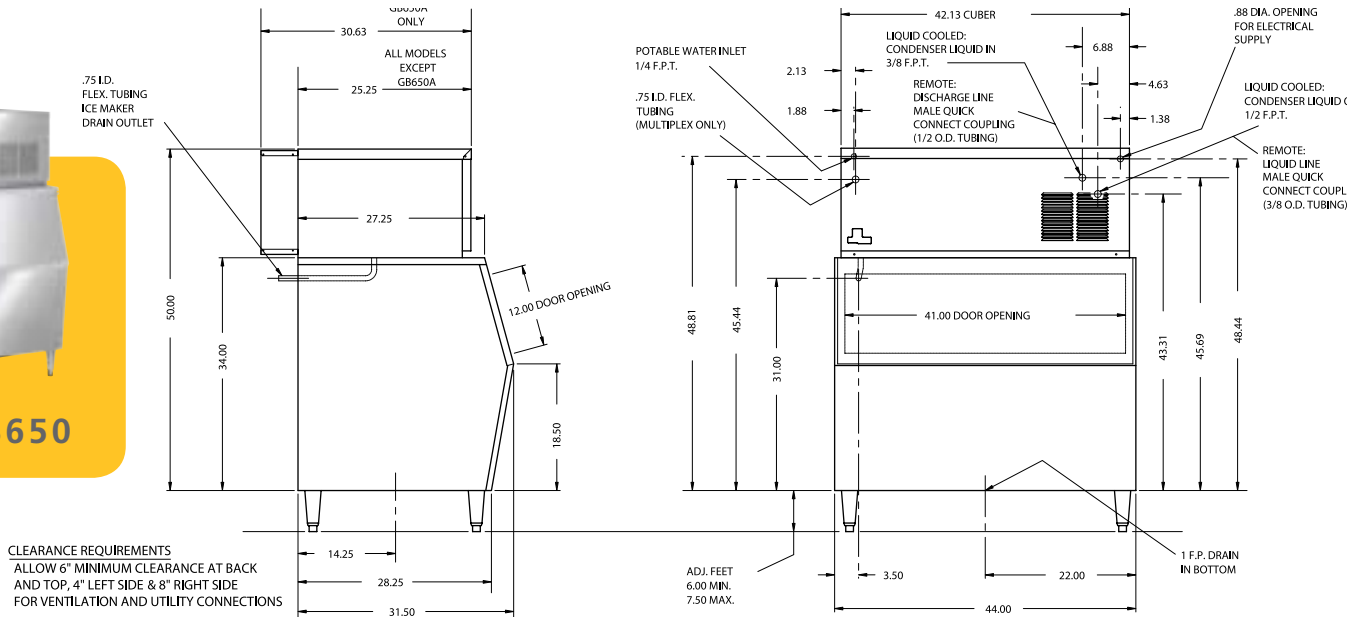
³ Use this value to determine minimum wire size per National Electric Code Requirements.

⁴ Condenser fan supplied separately.

Please observe minimum circuit ampacity and maximum fuse size listed above. Fuse or HACR-type circuit breaker branch circuit protection within the range of minimum ampacity and maximum fuse size shall be provided or warranty may be voided. We reserve the right to make product improvements at any time. Specifications and design are subject to change without notice.



GB650 | B650



KOLD-DRAFT

1525 E. Lake Road | Erie, PA 16511 | 800-840-9577 | Fax: 800-548-9392

e-mail: info@kold-draft.com | www.kold-draft.com

