



*GT350 Series Ice Cuber
on a B400 Bin*

GT350 | B400 ICE CUBER

UP TO 321 LB. DAILY CAPACITY

SIMPLICITY BY DESIGN

The **KOLD-DRAFT 350 Series Classic Ice Cuber** produces up to 321 lbs. of ice per day. It is engineered with rugged unibody construction and its time-proven design ensures reliable operation, greater water efficiency and maximum ice-making capacity. Serviceability is from the front and the use of environmentally-friendly R-404A refrigerant gives greater efficiency.

The **KOLD-DRAFT B400 Bin** holds 400 lbs. of ice. The **B400** has a stainless steel interior liner and stainless steel exterior front, sides and back. It is insulated with 2" of expanded foam insulation and comes with an insulated stainless steel lift up door that will withstand years of hard use.



Full Cube
1 1/4" x 1 1/4" x 1 1/4"



Half Cube
1 1/4" x 3/8" x 1 1/4"



Cubelet
1 1/4" x 3/8" x 3/8"

KOLD-DRAFT®

THE HIGHEST QUALITY ICE

Ice that's free from impurities. Ice that's uniformly shaped ensuring maximum displacement and ease of handling. Ice that sparkles, melts slowly and looks like ice should look. Three sizes of **KOLD-DRAFT** cubes to choose from that meet your exact needs. Full cubes, half cubes and cubelets – the highest quality ice.

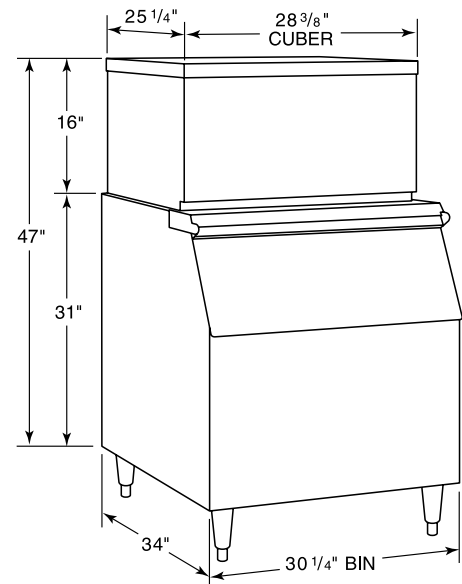
A LOT OF ICE IN A LITTLE SPACE

The **KOLD-DRAFT GT Series Slimline Cuber** is only 28 3/8" wide and is engineered and built to fit in small areas and produce up to 321 lbs. of ice per day. **GT Series Slimline** bins are available with storage capacities of 230 or 400 lbs.

KOLD-DRAFT'S WARRANTY

KOLD-DRAFT'S warranty provides five years parts and labor on the entire machine and five years on the compressor and evaporator parts. See **KOLD-DRAFT'S** Warranty Statement for details.

GT350 | B400



*GT351W on a B400 Bin. Stores 400 lbs. of ice,
based on 35 lbs./cu.ft. at 90% of bin volume.*

GENERAL SPECIFICATIONS FOR GT350 SERIES:

PLUMBING: 1/4" FPT potable water inlet.
 Condenser water supply inlet: 3/8" FPT
 3/4" FPT bin drain.
 Condenser drain: 1/2" FPT
 3/4" I.D. flex tubing cuber drain.

EXTERIOR FINISH:
 Type 300 Series stainless steel.

REFRIGERATION SYSTEM:
 5100 BTU Compressor. Thermostatic
 expansion-valve controlled. R-404A.

CLEARANCE REQUIREMENTS:
 Allow 6" minimum clearance at back,
 top and sides for ventilation and utility
 connections.

RECOMMENDED OPERATING REQUIREMENTS:

| | Min. | Max. |
|--------------------|-------------------|------|
| Air Temperatures | 45° | 90°F |
| Water Temperatures | 45° | 90°F |
| Water Pressures | 20-100 PSIG | |
| Voltage | 104-127V/198-253V | |

GT350 Series Daily Capacities: Lbs. of ice per 24 hours per unit

GT351W Water-Cooled

| Incoming Water Temp., °F | Ambient Temp., °F | Capacity |
|--------------------------|-------------------|-----------------|
| | 70° | 90° |
| 50° | 321lbs. 145kg | - |
| 70° | - | 299lbs. 136kg |

GT351A Air-Cooled

| Incoming Water Temp., °F | Ambient Temp., °F | Capacity |
|--------------------------|-------------------|-----------------|
| | 70° | 90° |
| 50° | 314lbs. 143kg | - |
| 70° | - | 247lbs. 112kg |

The above capacities are based on (HK) Half Cube and can be increased or reduced between 5-15% depending on cube size or by adjusting the cuber to produce concave cubes.

KOLD-DRAFT ice machines are designed for indoor use and for operation within the above listed limits. Any deviation may eliminate coverage of factory warranties. Failures caused by operation on voltages other than indicated on model nameplates are not considered defects.

GT350 | B400 ICE CUBER

| MODEL | ICE PRODUCTION PER 24 HOURS ¹ | ELECTRICAL SUPPLY CHARACTERISTICS, V-HZ-PH | NUMBER OF WIRES PLUS GROUND | MINIMUM CIRCUIT AMPACITY ² | MAXIMUM FUSE SIZE, A | CONDENSER UNIT TYPE | SHIPPING WEIGHTS |
|---------|--|--|-----------------------------|---------------------------------------|----------------------|---------------------|------------------|
| GT351A* | 314 | 115-60-1 | 2 | 15.6 | 25 | air-cooled | 164lbs. 74kg |
| GT351W* | 321 | 115-60-1 | 2 | 14.4 | 20 | water-cooled | 159lbs. 72kg |
| GT354A* | 314 | 208/230-60-1 | 2 | 9.3 | 15 | air-cooled | 164lbs. 74kg |
| GT354W* | 321 | 208/230-60-1 | 2 | 8.6 | 15 | water-cooled | 159lbs. 72kg |
| GT357A* | 314 | 220-50-1 | 2 | - | - | air-cooled | 164lbs. 74kg |
| GT357W* | 321 | 220-50-1 | 2 | - | - | water-cooled | 159lbs. 72kg |

*KOLD-DRAFT ICE: To specify described cube size place "K" cubelet, "HK" half-cube, or "C" full cube in place of *asterisk in model numbers.

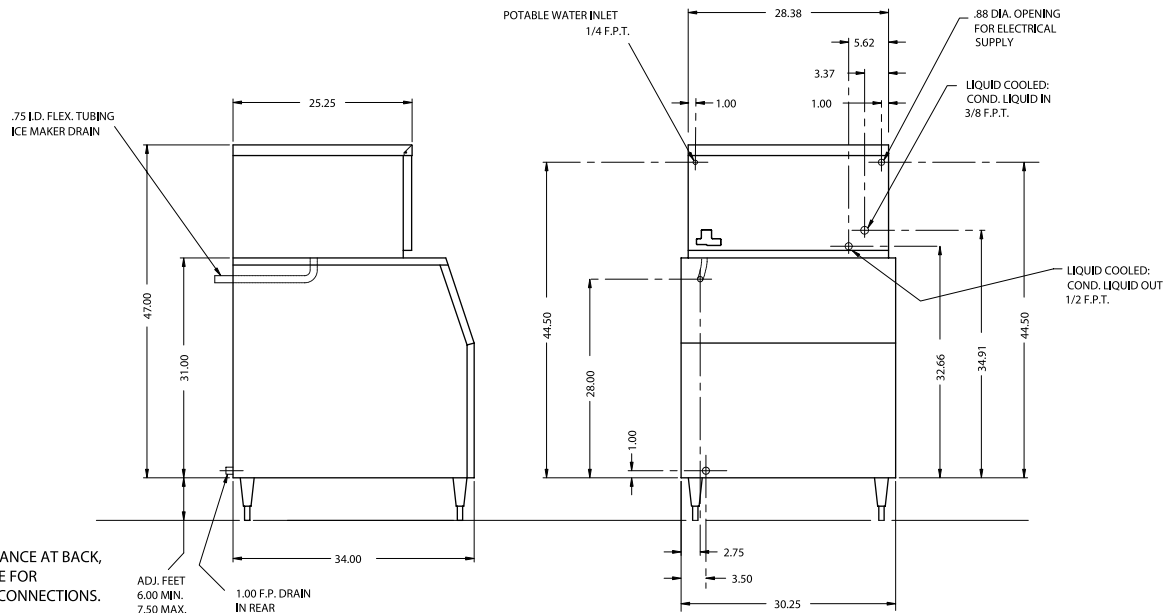
¹ Production capacity at 50°F water and 70°F air.

² Use this value to determine minimum wire size per National Electric Code Requirements.

Please observe minimum circuit ampacity and maximum fuse size listed above. Fuse or HACR-type circuit breaker branch circuit protection within the range of minimum ampacity and maximum fuse size shall be provided or warranty may be voided. We reserve the right to make product improvements at any time. Specifications and design are subject to change without notice.



GT350 | B400



CLEARANCE REQUIREMENTS
 ALLOW 6" MINIMUM CLEARANCE AT BACK,
 TOP, LEFT SIDE & RIGHT SIDE FOR
 VENTILATION AND UTILITY CONNECTIONS.

KOLD-DRAFT

1525 E. Lake Road | Erie, PA 16511 | 800-840-9577 | Fax: 800-548-9392
 e-mail: info@kold-draft.com | www.kold-draft.com

